

## SU-PRR SPHINX

ORIGIN: Canada

POWERS: Appears every 15 yrs  
Natural mutation  
Heart disease  
Sunburn  
Acne



## MEGA MOLE-RAT

ORIGIN: Africa

POWERS: Naturally hairless  
Sensitive to human touch  
Lives under a queen mole-rat  
Cannot feel most pain  
Social  
Pests to farmers



## RADICAL RAT

ORIGIN: Unknown

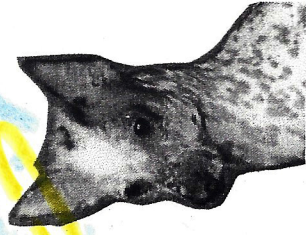
POWERS: Laboratory  
Cysts  
Enlarged blood vessels  
Regenerative eye disease  
Thyroid problems  
Skin disease  
Ingrown hairs



## DANGER DOG

ORIGIN: Peru

POWERS: GI Tract problems  
Loose molars/premolars  
Nervous system damage  
Congenital birth defects  
Acne  
Dominant hairless gene - lethal



## HAIRLESS HEROES



## NEW'DE GUINEA

ORIGIN: Charles River Laboratory

POWERS: Immunodeficient  
Skin Cancer  
Upper respiratory infection  
Genetic mutation  
No thymus



## BITCHIN' CHIKIN

ORIGIN: Israel

POWERS: Featherless  
Cross breed  
Prone to sunburn  
Vulnerable to parasites  
Less fatty  
"Cuts" down pollution

