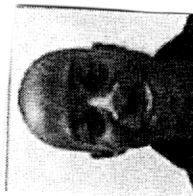




C.



B.



A.

(This study was based on research by Professor Paul Ekman, a psychologist at the University of California)

Guess who is wearing a  
FAKE SMILE

Answers:

- A. Genuine
- B. Fake
- C. Fake

The two types of smiles are very similar.

The differences are caused by the usage of a different set of muscles, controlled by a different part of the brain.

FAKE SMILES:

Brain signals that create them come from the conscious part of the brain and prompt the major muscles in the cheeks to contract outwards.



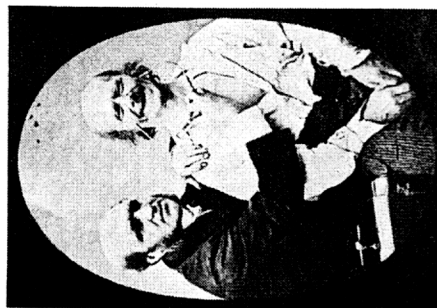
GENUINE SMILES:

Generated by the unconscious brain, so are automatic. The signals pass through the part of the brain that processes emotion. As well as the mouth muscles moving, the muscles raise the cheeks making the eyes crease upwards.



Jackie Martin

Fake Smiles



HOW CAN YOU TELL?

The eye cover fold (the fleshy part of the eye between the eyebrow and the eyelid) moves downward and the end of the eyebrows dip slightly.

The French neurologist Guillaume Duchenne used electrical stimulation to trigger different facial expressions by targeting and contracting specific muscles. Would these artificial smiles look more genuine than the fake ones we create ourselves?

Small science collective 2007  
<http://smallsciencezines.blogspot.com>

